



---

## BEASY Launches Version 10 of its Signature Management Toolkit

---

BEASY announced today the latest release of its market leading software for modelling corrosion and corrosion related electric and magnetic fields. There are significant benefits and additional capabilities in Version 10 with enhanced features, new tools and new wizards to enable all aspects of corrosion and corrosion related electric and magnetic fields to be studied.

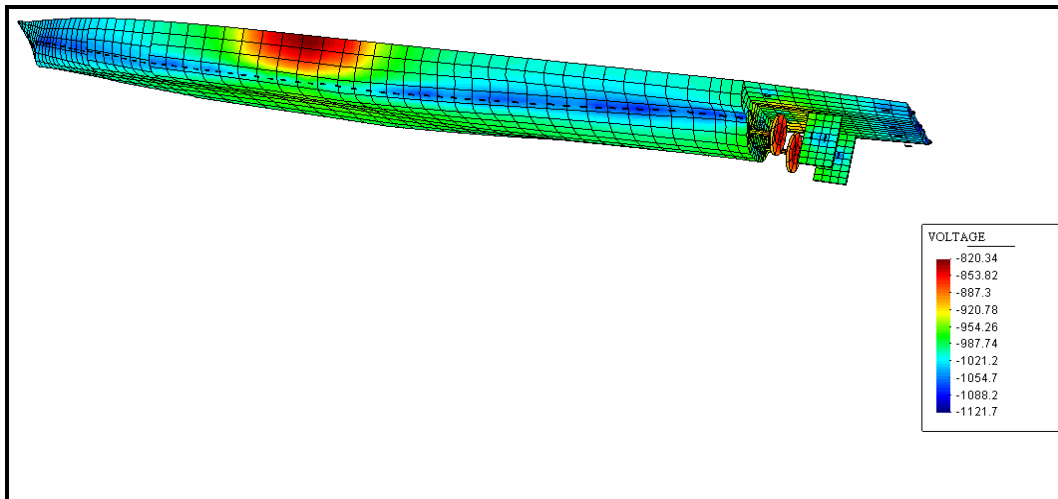
Significant new additions are the concept modelling and characterisation tool. The concept modelling tool enables proposed designs to be represented by a system of dipoles and the resulting electric and magnetic field quickly predicted. The characterisation tool can be used to compute the equivalent dipole model which matches the electric field from either a detailed BEASY model or data obtained from ranging. In this way, the variation in the signature can be quickly assessed when the vessel moves from shallow to deep water or experiences changes in resistivity.

Major improvements have also been made to the detailed BEASY Corrosion Related Magnetic Field solver so that the computation time is now reduced to just a few minutes to calculate the CRM field once the corrosion solution is known.

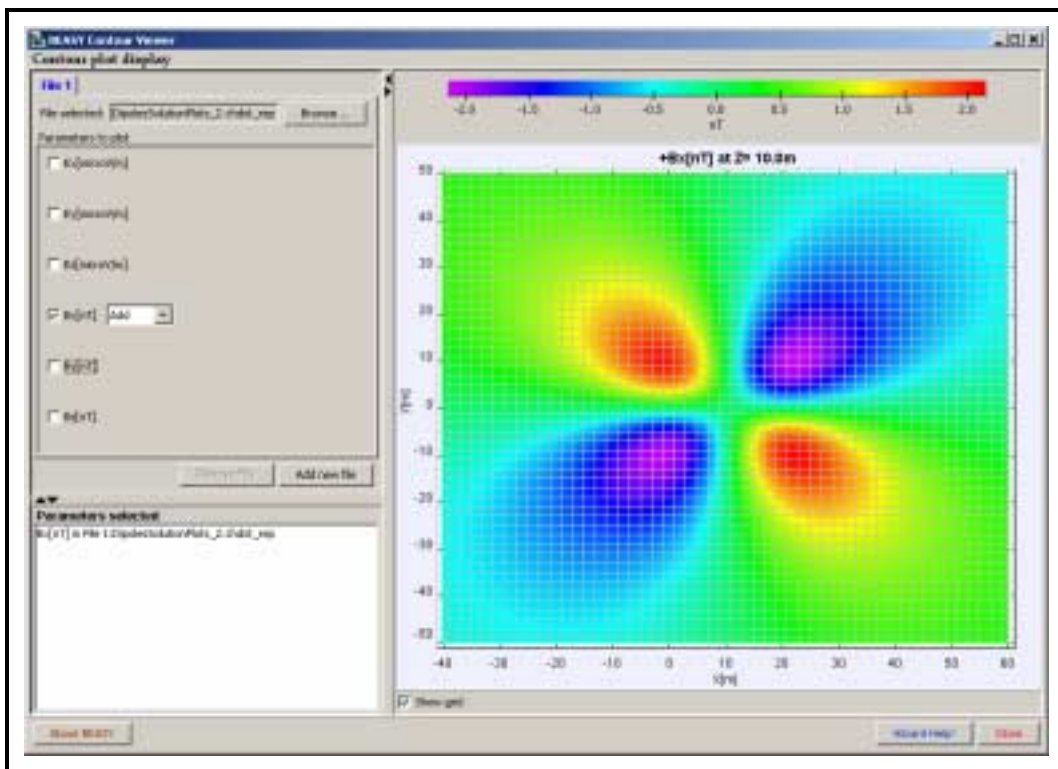
Dr Robert Adey, MD of BEASY, commented

*“This new release revolutionises the way engineers can use BEASY to find optimum corrosion control solutions while minimising corrosion related signatures. The new spreadsheet style interfaces, new conceptual modelling tools and the improvements to the detailed modelling tools will provide our users a significant increase in capability and productivity.”*

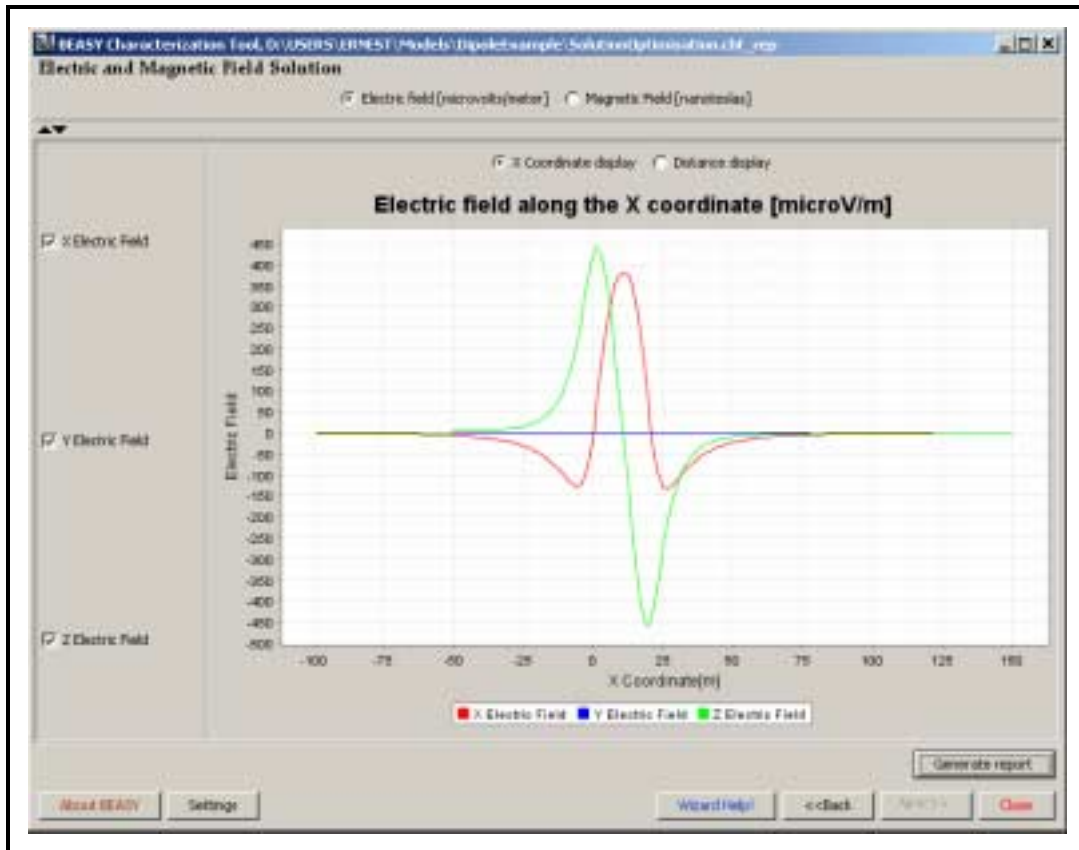
For information related to this latest release, please contact us using the email address [sales@beasy.com](mailto:sales@beasy.com).



*The impact of changes in the CP system design on the Protection Potentials on the vessel hull can be quickly evaluated.*



*Interactive displays can be quickly created within the BEASY Wizards. Here the magnetic field under the vessel is displayed.*



*The signature can be predicted and combined with other signature such as these generated by the flow of current through the vessel structure.*

(To obtain high resolution copies of these images contact [admin@beasy.com](mailto:admin@beasy.com))

#### About BEASY

BEASY provides powerful software applications which supply the tools needed to quickly and accurately simulate the life and performance of products. Applications include: Mechanical Analysis (stress and thermal), Durability and Crack Growth Analysis, Corrosion and Cathodic Protection, Corrosion Related Electric & Magnetic Fields and Acoustic Design and Noise Control.

BEASY hold regular seminars throughout the year which provide an overview of the benefits and solutions available from BEASY and a hands-on workshop where attendees can try out their particular application of interest with BEASY technical support staff on hand. See the website for information on dates and topics – [www.beasy.com](http://www.beasy.com)

#### For further information please contact:

Catherine Marden  
 Computational Mechanics BEASY  
 Ashurst Lodge, Ashurst, Southampton  
 SO40 7AA, UK

Tel: +44 (0) 23 8029 3223  
 Fax: +44 (0) 23 8029 2853

Email: [sales@beasy.com](mailto:sales@beasy.com)  
<http://www.beasy.com>

Or our US Office:  
 Computational Mechanics Inc  
 25 Bridge Street, Billerica  
 MA 01821, USA

Tel: 978 667 5841  
 Fax: 948 667 7582

Email: [sales@beasy.com](mailto:sales@beasy.com)  
<http://www.beasy.com>

Or see our website for full listings of our distributor network around the world:

[www.beasy.com](http://www.beasy.com)